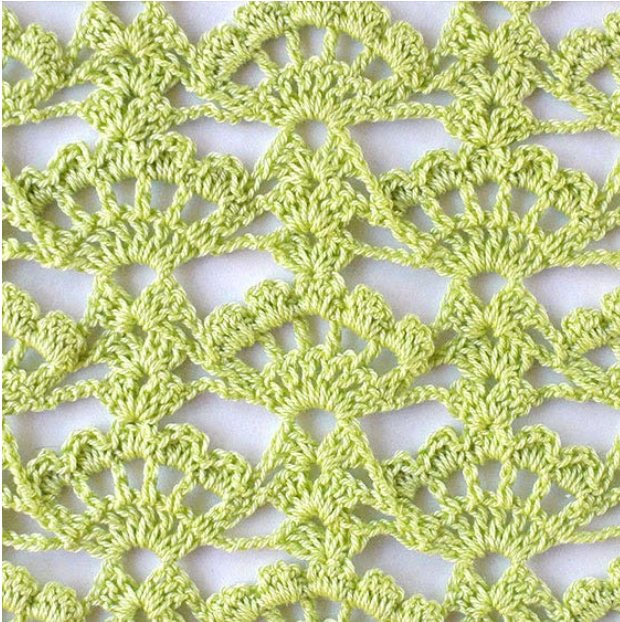


## Shell Cascade lace

Crochet lace stitch featuring mixed shells  
#2056



### UK term | US term

Chain stitch – ch

Double crochet / Single crochet – dc / sc

Treble / Double crochet – tr / dc

**Shell** – work 3 tr/dc + 2 ch + 3 tr/dc in the same stitch

**Small shell** – work 1dc/sc + tr/dc + 1 dc/sc in the same space

**Foundation Chain:** Multiples of 26 + 5

**Row 1:** 4 ch skip, work into foundation chain 3 tr/dc, 5ch, 11 ch skip, 2tr/dc + 1ch + 1t/dc in next ch, 1ch, 1tr/dc + 1ch + 1tr/dc in next ch, 1 ch, 1 tr/dc + 1 ch + 2 tr/dc in next ch, 5 ch, 11 ch skip,

\* shell in next ch, 5ch, 11 ch skip, 2tr/dc + 1ch + 1t/dc in next ch, 1ch, 1tr/dc + 1ch + 1tr/dc in next ch, 1 ch, 1 tr/dc + 1 ch + 2 tr/dc in next ch, 5 ch, 11 ch skip; rep from\*,

3 tr/dc + 1ch + 1 tr/dc in last ch. Turn.



**Row 2:** 4 ch, 3 tr/dc in space of 1 ch, 2 ch, 2 tr/dc, work 5 times: 2 ch + 1 tr/dc; 1 tr/dc, 2 ch,

\* shell in shell, 2 ch, 2 tr/dc, work 5 times: 2 ch + 1 tr/dc; 1 tr/dc, 2 ch; rep from\*,

3 tr/dc in space of 4 ch, 1ch, 1tr/dc in third ch. Turn.

**Row 3:** 5ch, 3 tr/dc in space of 1 ch, 2 ch, 1 dc/sc in first tr/dc, work 5 small shells over the next five spaces of 2 ch, 1 dc/sc in last tr/dc, 2 ch,

\* 3 tr/dc + 5ch + 3tr/dc in shell below, 2 ch, 1 dc/sc in first tr/dc, work 5 small shells over the next five spaces of 2 ch, 1 dc/sc in last tr/dc, 2 ch; rep from\*,

3tr/dc in space of 4 ch, 2 ch, 1 tr/dc in third ch. Turn.



**Row 4:** 4ch, work in space of 2 ch: 1 tr/dc + 1ch + 1 tr/dc + 1ch + 2tr/dc; 5 ch, shell in top of the third small shell below,

\* 5 ch, work in space of 5 ch: 2 tr/dc, 5 times – 1ch + 1tr/dc, 1 tr/dc; 5 ch, shell in top of the third small shell below; rep from \*,

5 ch, 2 tr/dc + 1ch + 1tr/dc + 1ch + 1 tr/dc, 1ch, 1 tr/dc in third ch. Turn.

**Row 5:** 4 ch, work 2 times: 1 tr/dc + 2ch; 2 tr/dc, 2 ch,

\* shell in shell, 2 ch, 2 tr/dc, work 5 times: 2 ch + 1 tr/dc; 1 tr/dc, 2 ch; rep from\*,

shell in shell, 2 ch, 2tr/dc, work 2 times: 2 ch + 1 tr/dc; 1 ch, 1 tr/dc in third ch. Turn.



**Row 6:** 3 ch, 2tr/dc + 1dc/sc in space of 1 ch, work 2 small shells over the next two spaces of 2 ch, 1 dc/sc in last tr/dc, 2 ch,

\* 3 tr/dc + 5ch + 3tr/dc in shell below, 2 ch, 1 dc/sc in first tr/dc, work 5 small shells over the next five spaces of 2 ch, 1 dc/sc in last tr/dc, 2 ch; rep from\*,

3 tr/dc + 5ch + 3tr/dc in shell below, 2 ch, 1 dc/sc in first tr/dc, work 2 small shells over the next two spaces of 2 ch, 1dc/sc + 2 tr/dc in space of 4 ch, 1 tr/dc in third ch. Turn.

**Row 7:** 4 ch, 3 tr/dc in next stitch, 5 ch, work in space of 5 ch: 2 tr/dc, 5 times – 1ch + 1tr/dc, 1 tr/dc; 5 ch,

\* shell in top of the third small shell below, 5 ch, work in space of 5 ch: 2 tr/dc, 5 times – 1ch + 1tr/dc, 1 tr/dc; 5 ch; rep from\*, 3tr/dc + 1ch + 1 tr/dc in last stitch. Turn.



*Repeat rows 2 - 7* until you have reached your desired length.

## Materials

Pearl crochet cotton size 8, and steel crochet hook size 1.50 - 1.75 mm / 8 - 6.

You may use any yarn of your choice, and a suitable hook.

